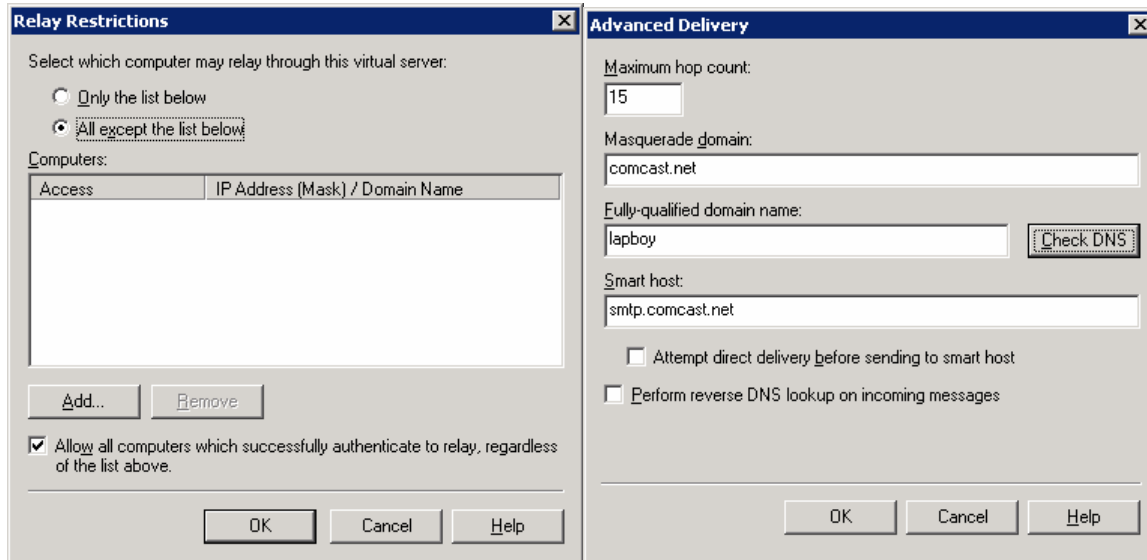


## How to Configure Database Mail for SQL Server 2005

Author: James L. Colestock  
Last Modified: 8/25/2006

Go to Control Panel > Administrative Tools > Internet Information Services > Select 'Default SMTP Virtual Server' and Right-click on 'Properties'

Adjust setting appropriate for your environment. Here are the changes I made to send mail from my localhost, using Comcast's SMTP Server as a smart host:



Bounce the Service via the Service Panel or via the command-line:

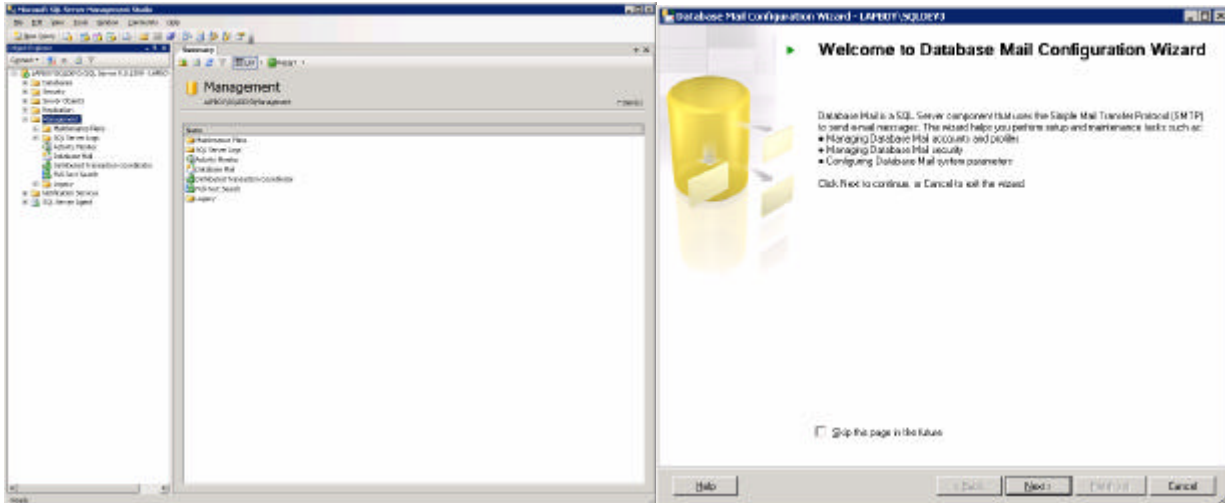
```
# net stop "Simple Mail Transfer Protocol (SMTP)"  
# net start "Simple Mail Transfer Protocol (SMTP)"
```

Once this has been established you can configure Database Mail in SQL Server 2005, either through the command-line or via the GUI.

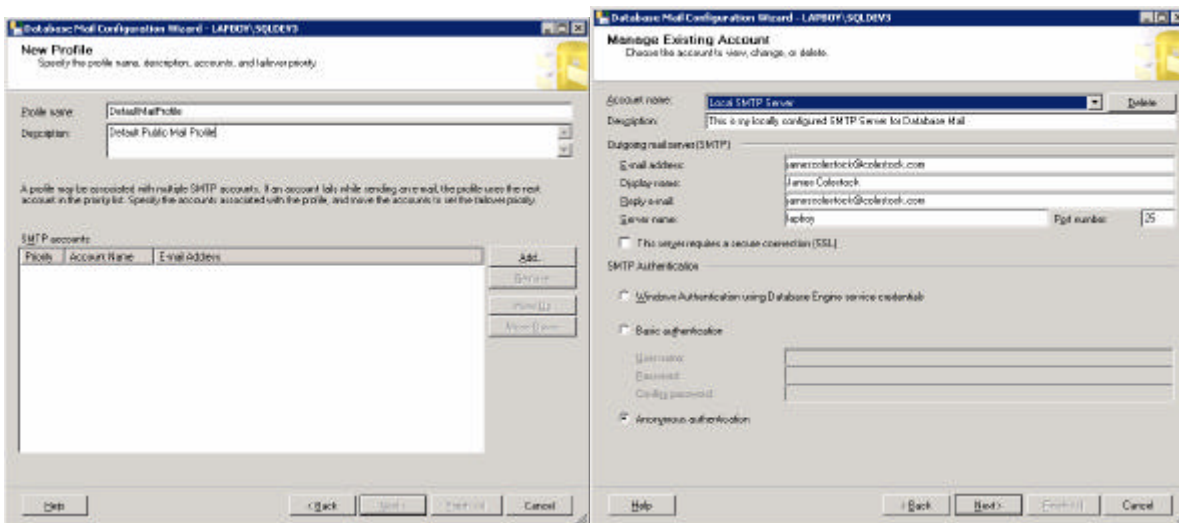
## Configure via the GUI:

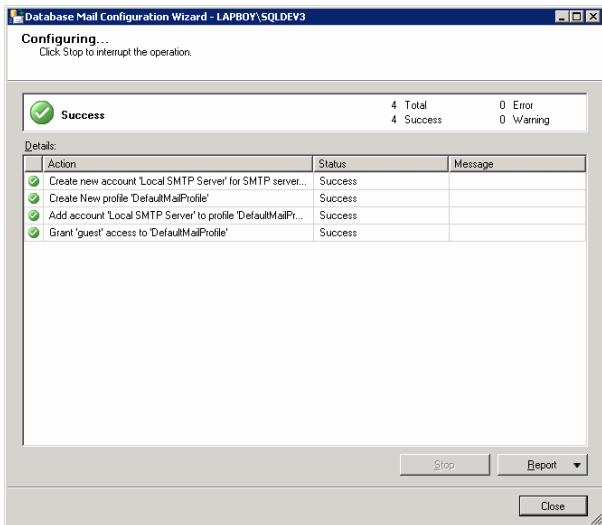
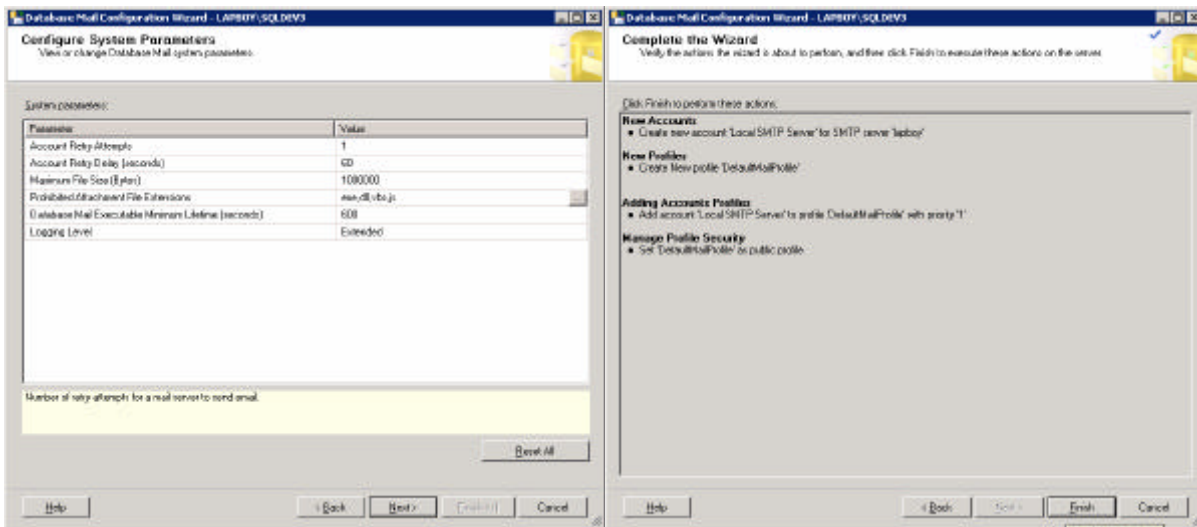
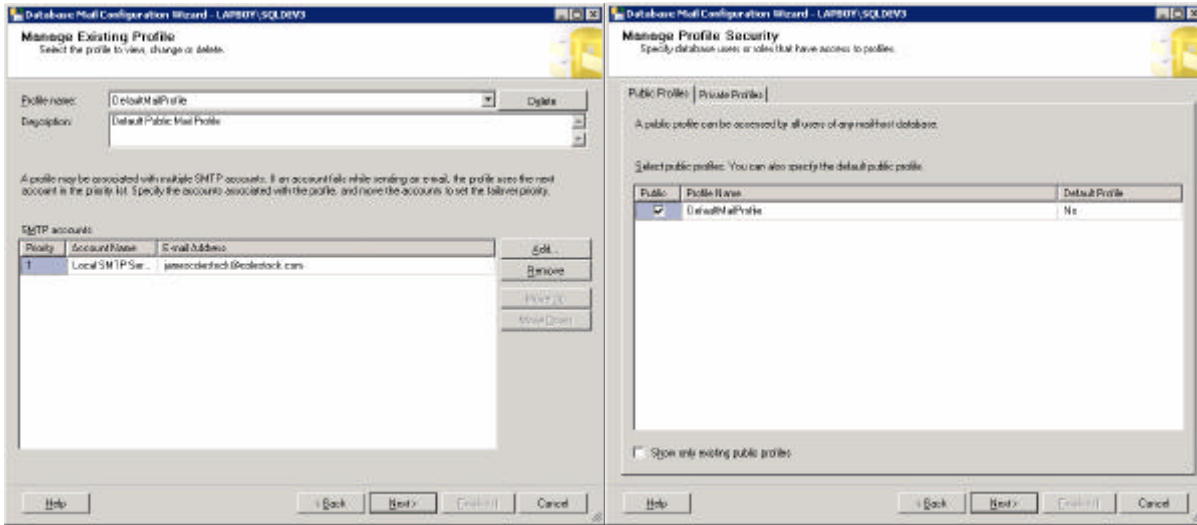
Go to **All Programs > Microsoft SQL Server 2005 > SQL Server Management Studio** and login with the appropriate credentials:

Expand the Management tab and right-click 'Database Mail'; select 'Configure Database Mail,' and the Database Mail Configuration Wizard will appear

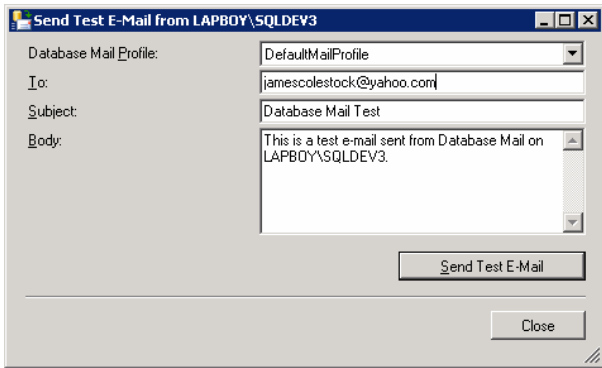


Follow the Wizard and enter the appropriate information for your environment; here are screenshots of my configuration:





Next, I test the email settings that I configured above by right-clicking on **Management > Database Mail** and selecting the 'Send Test E-Mail' option; follow the prompts:

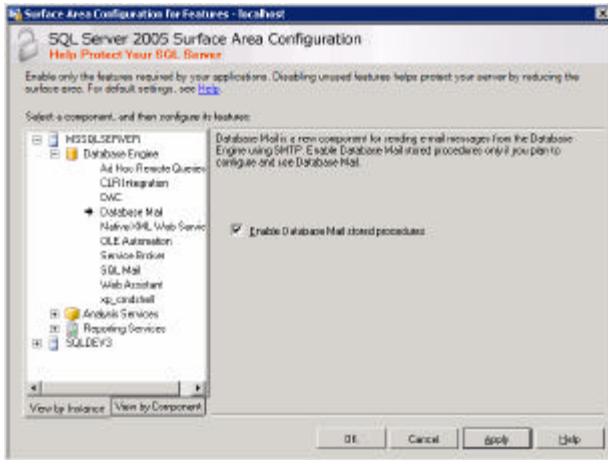


If you run into problems I would suggest the following:

- ? Bounce the SQL Server, SQL Server Agent, and SMTP services
- ? Check the Database Mail Log
- ? Double-check that your E-mail addresses listed in your SMTP account reflect a true domain; in my case: colestock.com

### Configure via the command-line:

First make sure that All Programs > Microsoft SQL Server 2005 > Configuration Tools > SQL Server Surface Area Configuration lists Database Mail stored procedures as enabled:



-- Create the SMTP Account

```
EXECUTE msdb.dbo.sysmail_add_account_sp
  @account_name = 'Local SMTP Server Manual',
  @description = 'Account setup via the command-line method',
  @email_address = 'james@colestock.com',
  @display_name = 'From your SQL Server Database',
  @mailserver_name = 'lapboy'
```

-- Create the Profile

```
EXECUTE msdb.dbo.sysmail_add_profile_sp
  @profile_name = 'Local SMTP Profile Manual',
  @description = 'Profile setup via the command-line method'
```

-- Associate the Profile with the E-mail account

```
EXECUTE msdb.dbo.sysmail_add_profileaccount_sp
  @profile_name = 'Local SMTP Profile Manual',
  @account_name = 'Local SMTP Server Manual',
  @sequence_number = 1
```

-- Make the Profile the Public Default

```
EXECUTE msdb.dbo.sysmail_add_principalprofile_sp
  @profile_name = 'Local SMTP Profile Manual',
  @principal_name = 'public',
  @is_default = 1 ;
```

-- Programmatically Test

```
EXEC msdb.dbo.sp_send_dbmail @recipients='jamescolestock@yahoo.com',
  @subject = 'Test of Manual ',
  @body = 'Database Mail Test from SQL Server 2005',
  @body_format = 'HTML' ;
```